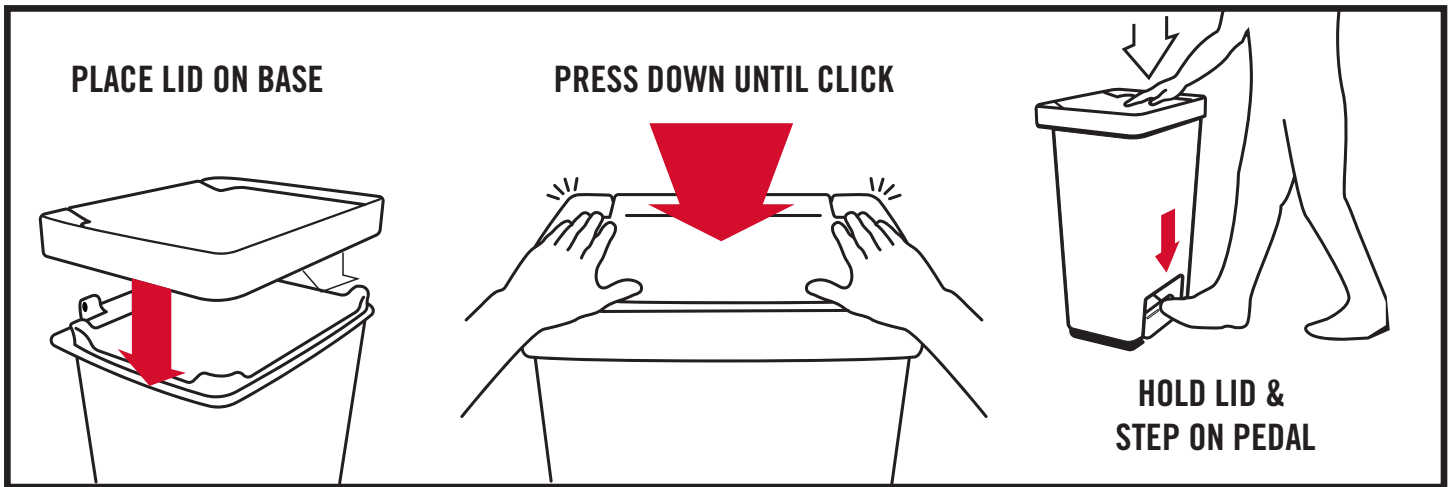


**Rubbermaid**®

## PREMIER® SERIES STEP-ON LID INSTALLATION INSTRUCTIONS



- 1** Place lid on base, lining up front corners of the container. For Premier® Series II-IV, make sure the lock is in the unlock position.
- 2** Press down on the back corners of the container until you hear a click.
- 3** Hold your hand on the lid and step on the pedal to center the lift rod. Enjoy your Rubbermaid® Premier® Series Step-On.