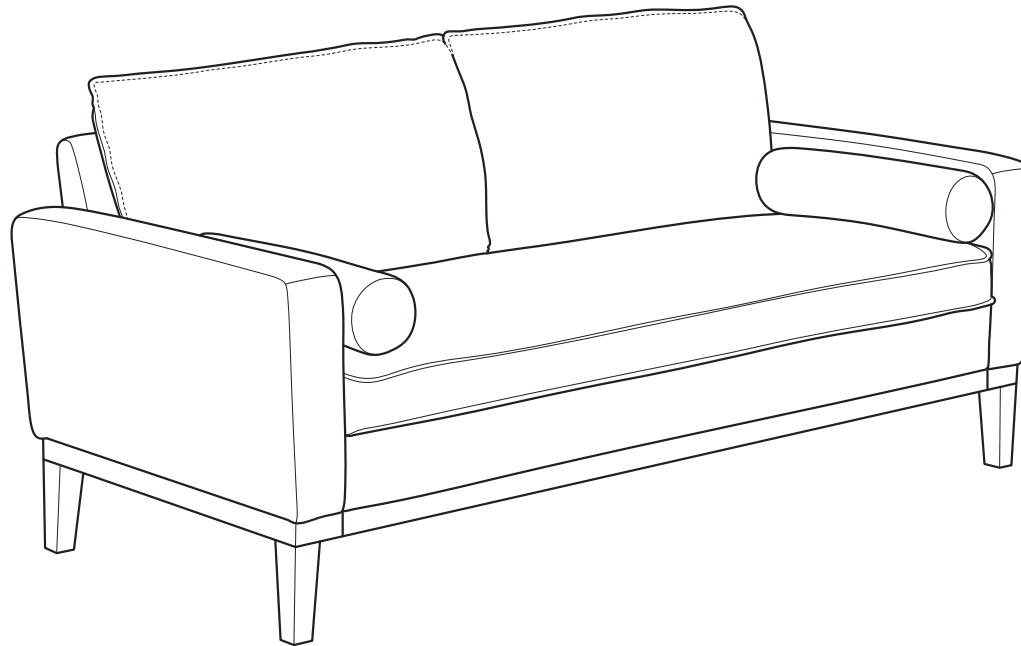




LIFESTYLE
S O L U T I O N S

SOFA

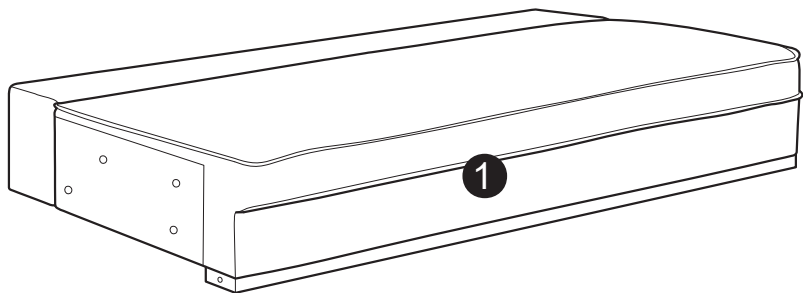
ASSEMBLY INSTRUCTIONS



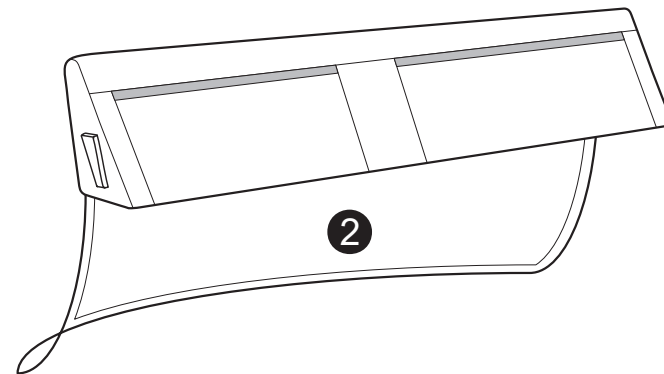
WARNING

- This product has been designed for seating three (3) average adults. To prevent injury and damage to this unit, PROHIBIT jumping on it.
- This product is designed for home use and not intended for commercial use.
- Children under the age of 5, small infants and babies should not sleep alone on this product for safety reasons.
- Recommended # of people needed for handling: 2 (however it is always better to have an extra hand.)
- THIS INSTRUCTION BOOKLET CONTAINS **IMPORTANT** SAFETY INFORMATION. PLEASE READ AND KEEP FOR FUTURE REFERENCE.

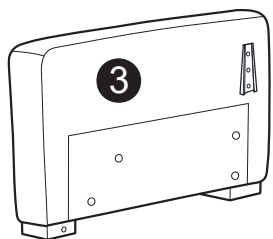
PARTS



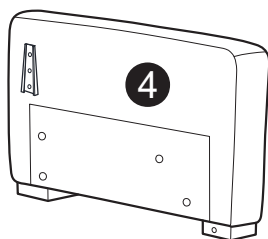
Sofa Body
QTY:1



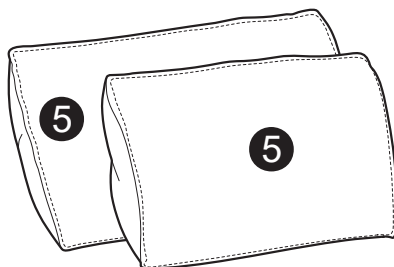
Backrest
QTY:1



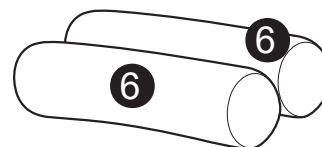
Left Facing Arm
QTY:1



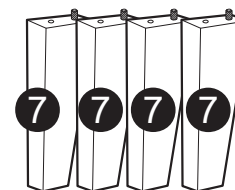
Right Facing Arm
QTY:1



Back Cushions
QTY:2



Pillow
QTY:2

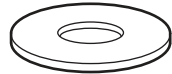


Leg
QTY:4

HARDWARE



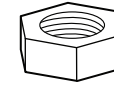
A
Wood Dowel
M8 × 40mm
QTY : 2 PCS



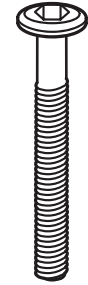
B
Washer
Φ22 x Φ8mm
QTY : 8 PCS



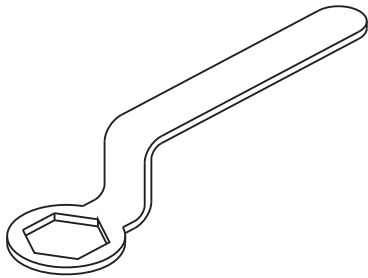
C
Washer
Φ17 x Φ8mm
QTY : 4 PCS



D
Nut
M8
QTY : 8 PCS



E
Bolt
M8 X 95mm
QTY : 4 PCS



F
Spanner
14mm
QTY : 1 PC

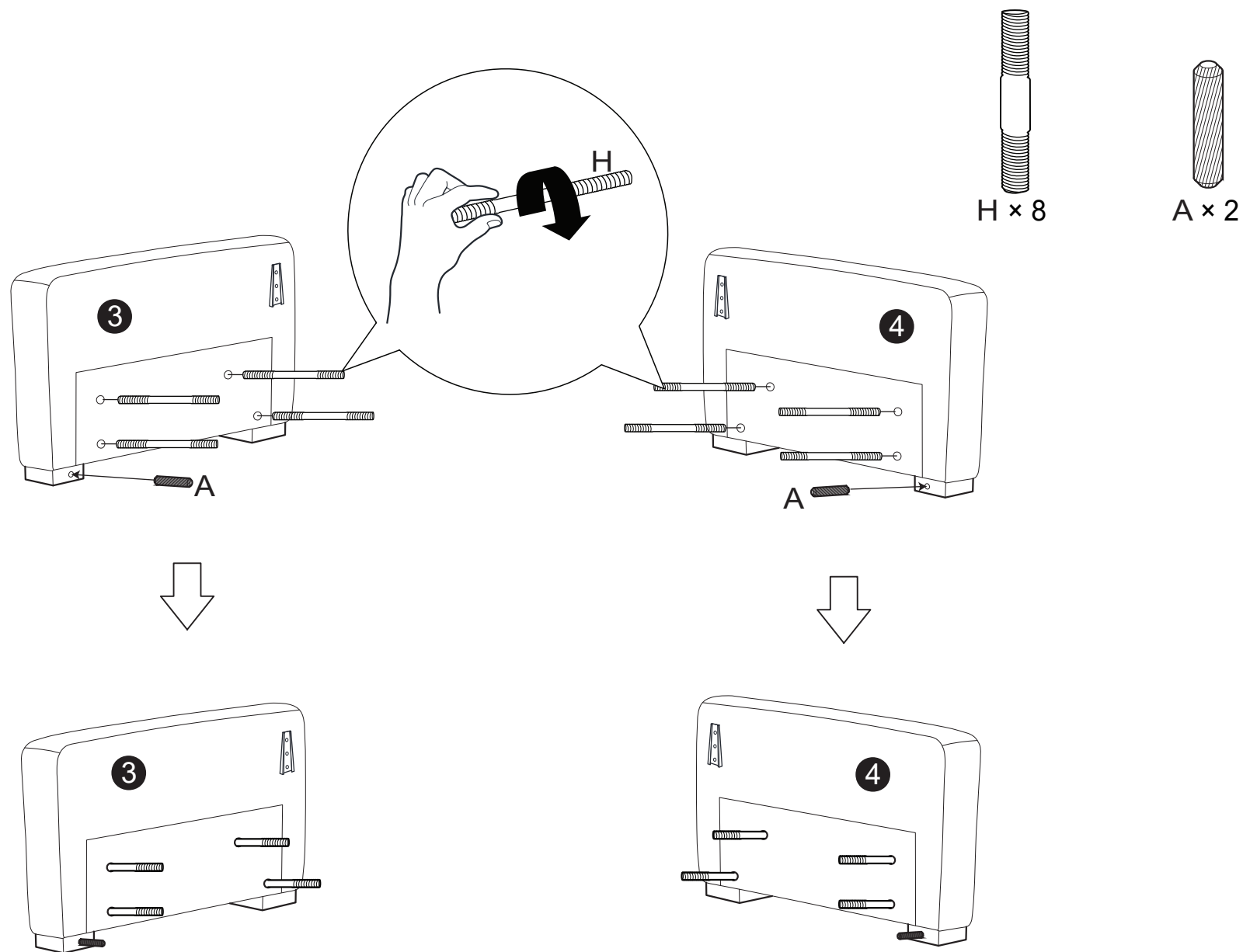


G
Hex Key
M5 X 150mm
QTY : 1 PC

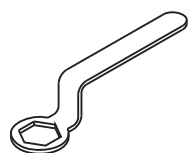


H
Threaded Rod
M8 × 70mm
QTY : 8 PCS

Step 1 :



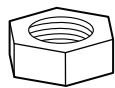
Step 2 :



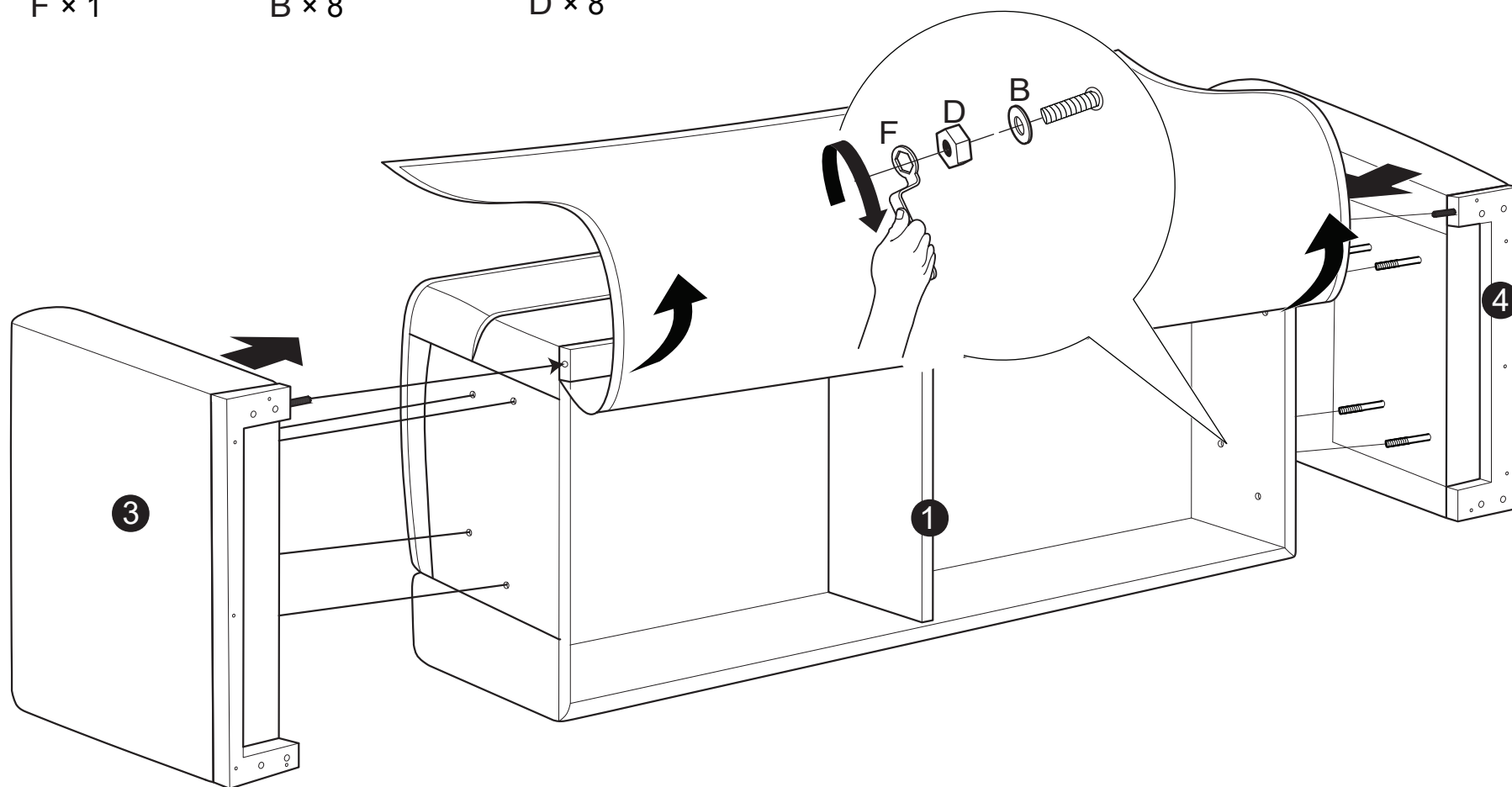
F x 1



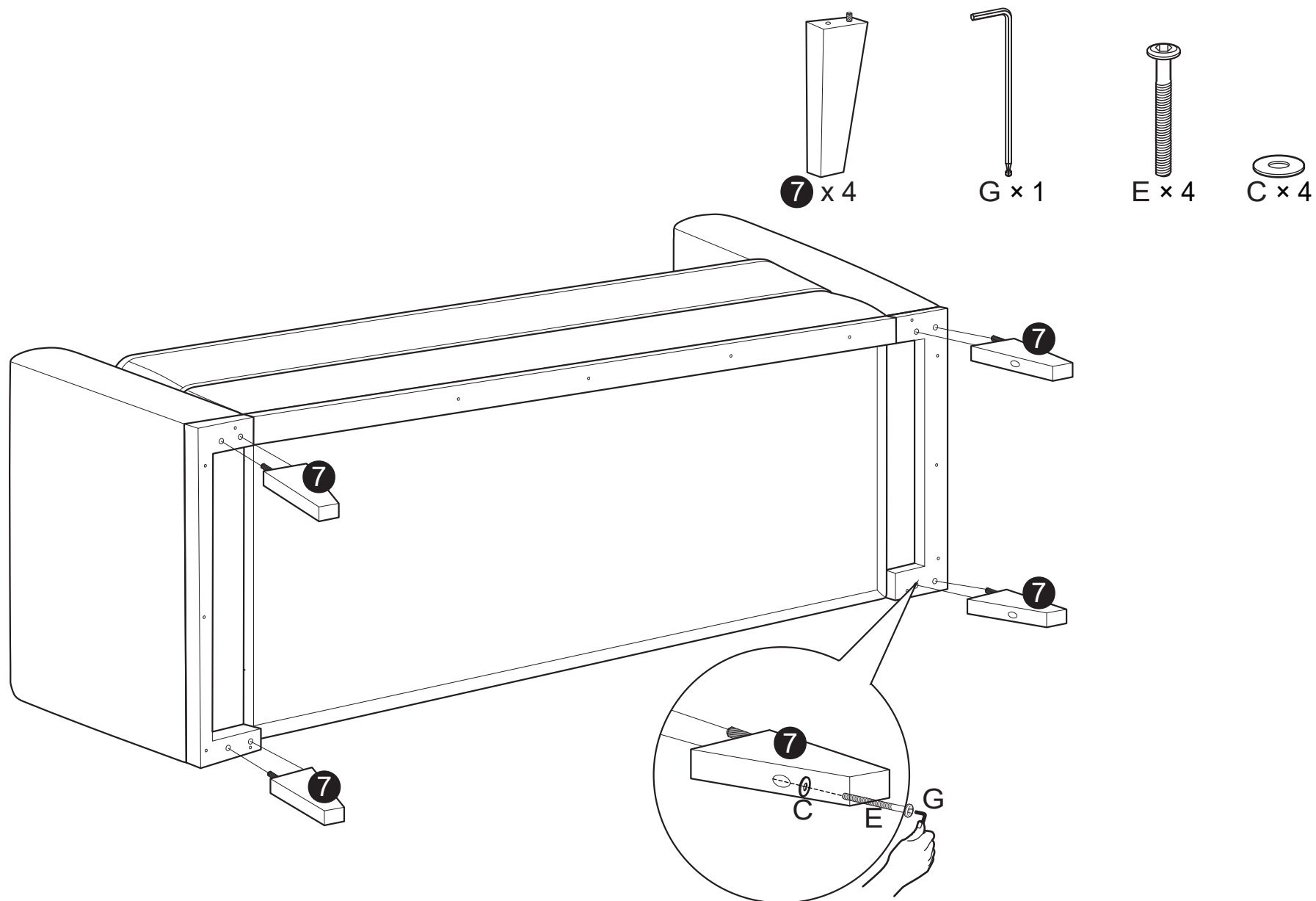
B x 8



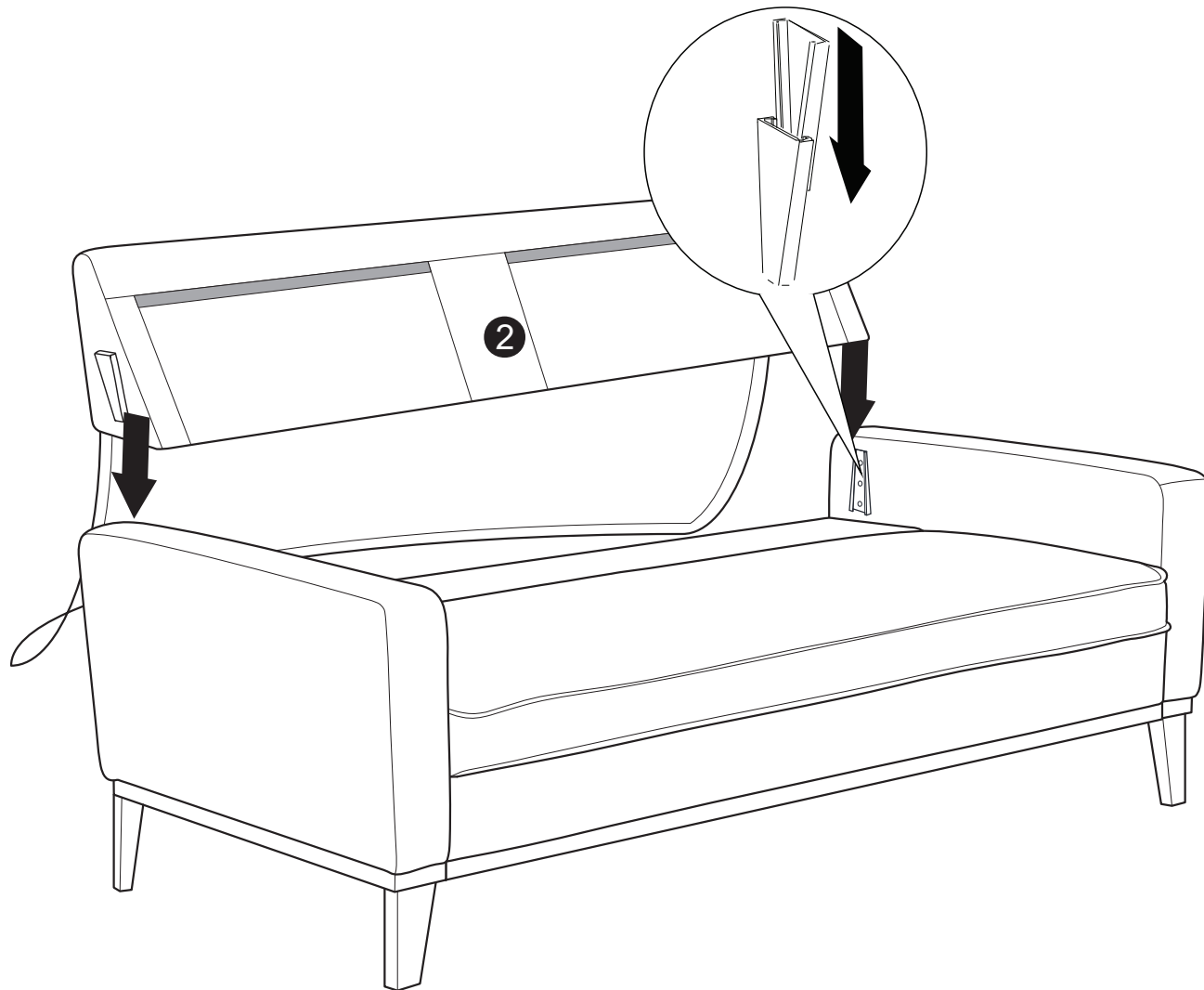
D x 8



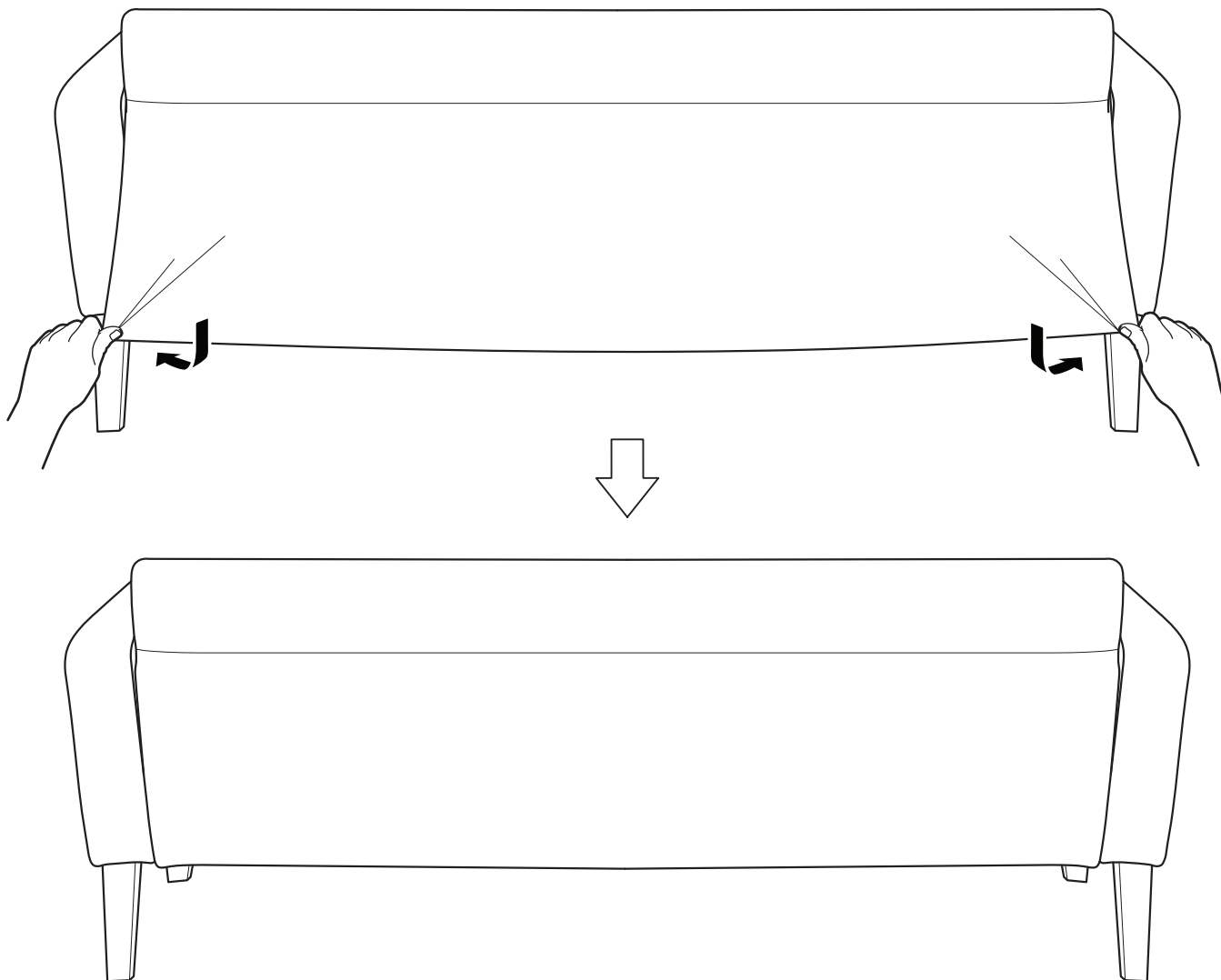
Step 3 :



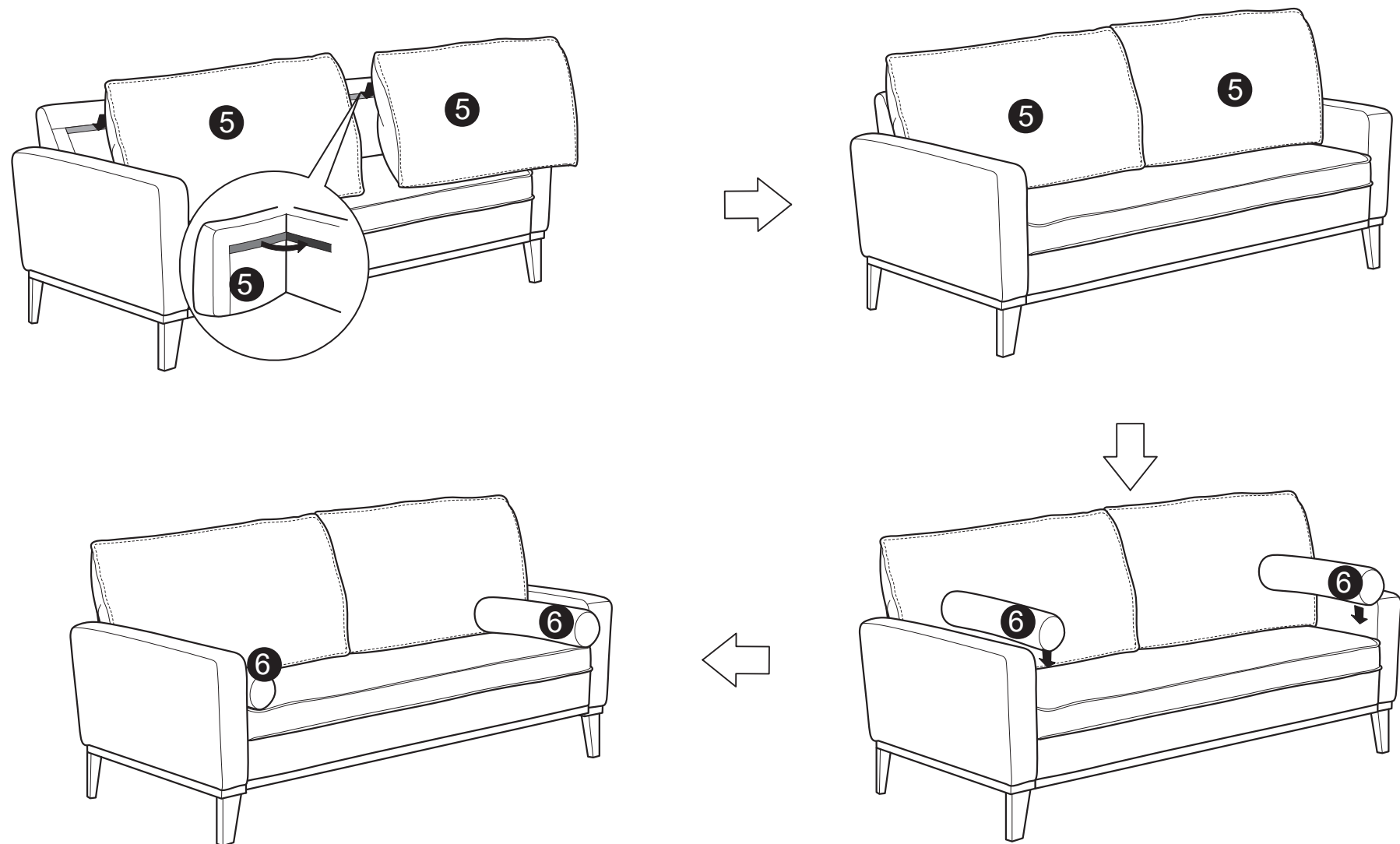
Step 4 :



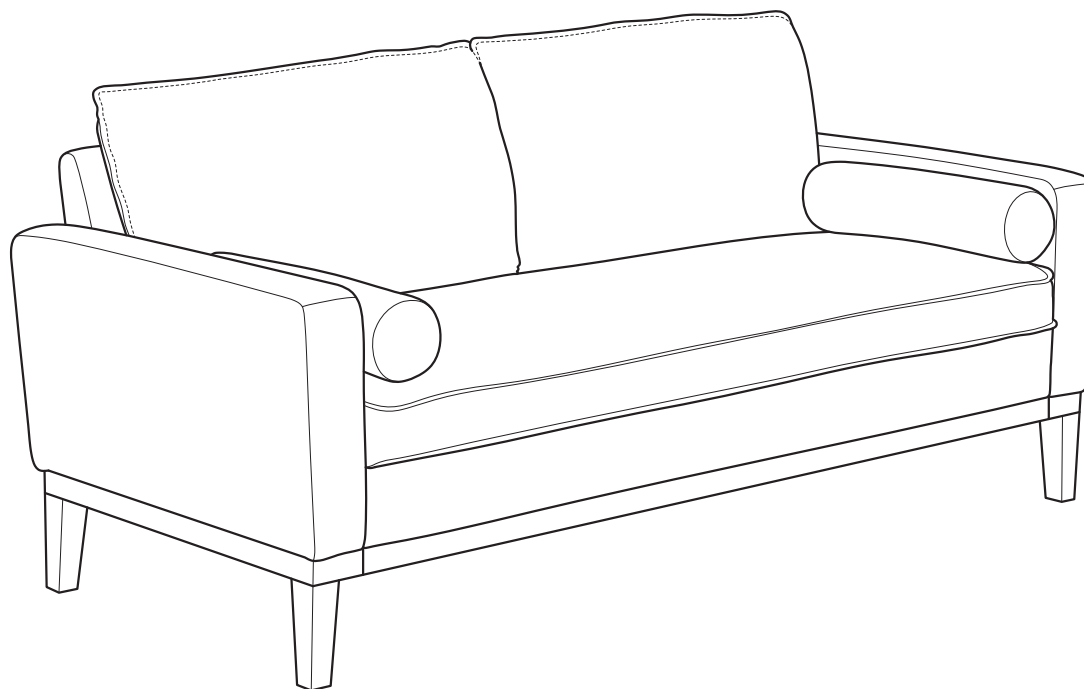
Step 5 :



Step 6:



INSTALLATION COMPLETE :



Need assistance?
Please call :
866-626-7826

For prompt, reliable service; please have your assembly manual ready.