



VISTA RIVER ALL WEATHER WICKER STORAGE COFFEE TABLE

ASSEMBLY INSTRUCTIONS

ITEM# : GBO22-901T

SKU# : 810544466

Need help? We are here for you! 1-888-733-8169 Toll Free

Or email us at customerservice_01@yeah.net, customerservice_02@yeah.net

customerservice_03@yeah.net

GENERAL BEST PRACTICES FOR ASSEMBLY:

Read all instructions before starting

Clear a flat covered space to begin assembly

Always best to do it with a friend

Note that hardware required is provided for every step

Pay attention to orientation

Number of the hardware corresponds to its letter in the package

Helpful hints provided along the way

WARNINGS:

Use the correct screws as indicated. All screws should be hand tightened until the complete piece is assembled (This will make the assembly process much easier). Once the piece is fully assembled, then go back and tighten all screws with provided tool.

Keep all children and pets away from assembly area. Children and pets should be supervised when they are in the area of the product construction.

Keep assembly area at least 6 feet from any obstruction such as a fence, garage, house, overhanging branches, laundry line or electrical wires.

Some parts may contain sharp edges. When assembling and using this product, basic safety precautions should always be followed to reduce the risk of personal injury and damage to the product. Please read all instructions before assembly and use.

The table is not to be used for standing purposes and will not function as a stool or step-ladder. Use on even surfaces only.

In order to make the whole product adjust to the best, please install all the screws on the product and tighten all the screws after adjusting the product which can stand on the floor even.

**Improper use of this product or failure to use as directed may result in injury.
Not intended for commercial use.**

MAINTENANCE

ALL WEATHER WICKER PRODUCT CARE

Before using, clean the product completely with a soft dry towel. When not in use, wipe free of any dirt or loose objects, wash with a mild solution of soap and water, rinse thoroughly and dry completely. Do not use strong detergent or abrasive cleaners. Screws can loosen over a period of usage, please check the screws occasionally and re-tighten if necessary.

PARTS LIST



A

1PC Table Top



B

1 PC Bottom Board



C1

1PC Front Board



C2

1PC Back Board



D

2PC Side Board

HARDWARE LIST



E

8PC Short Screw(φ6x15mm)



F

8PC Washer



G

2PC Long Screw(φ5x44mm)



H

2PC Nut



I

2PC Iron Chain



J

1PC Allen Wrench

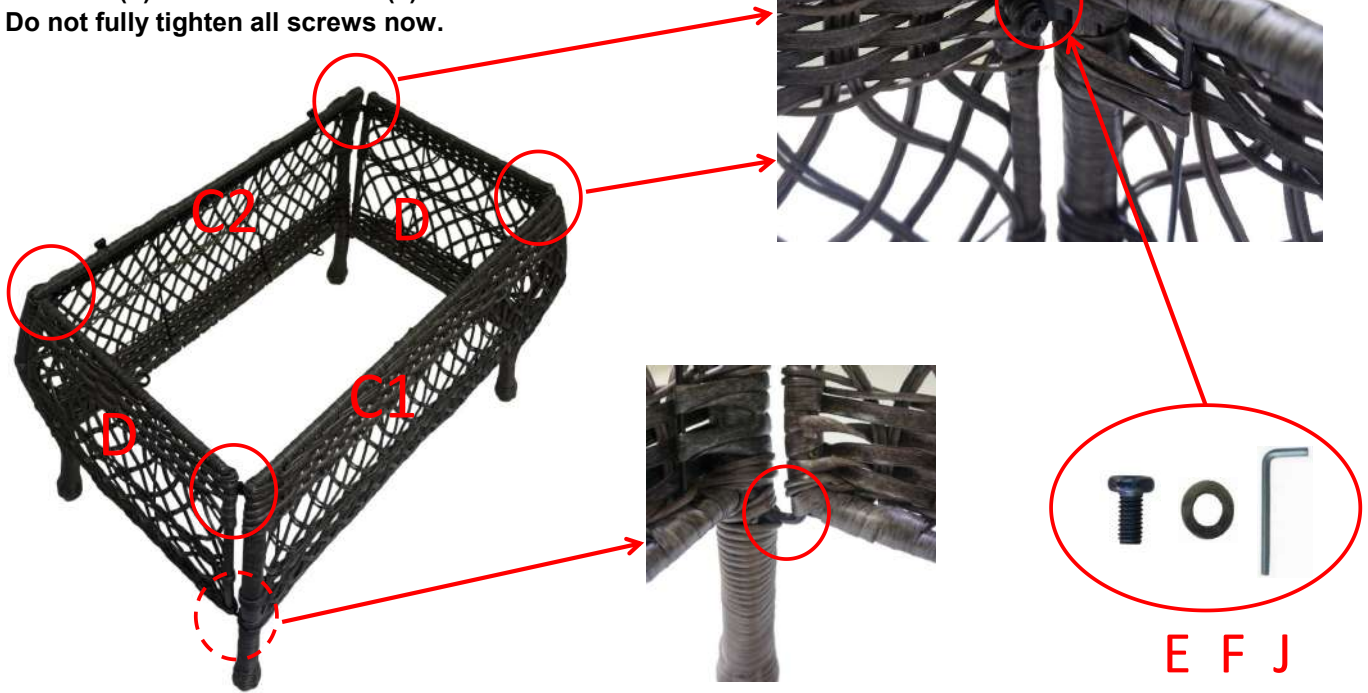


K

1PC Wrench

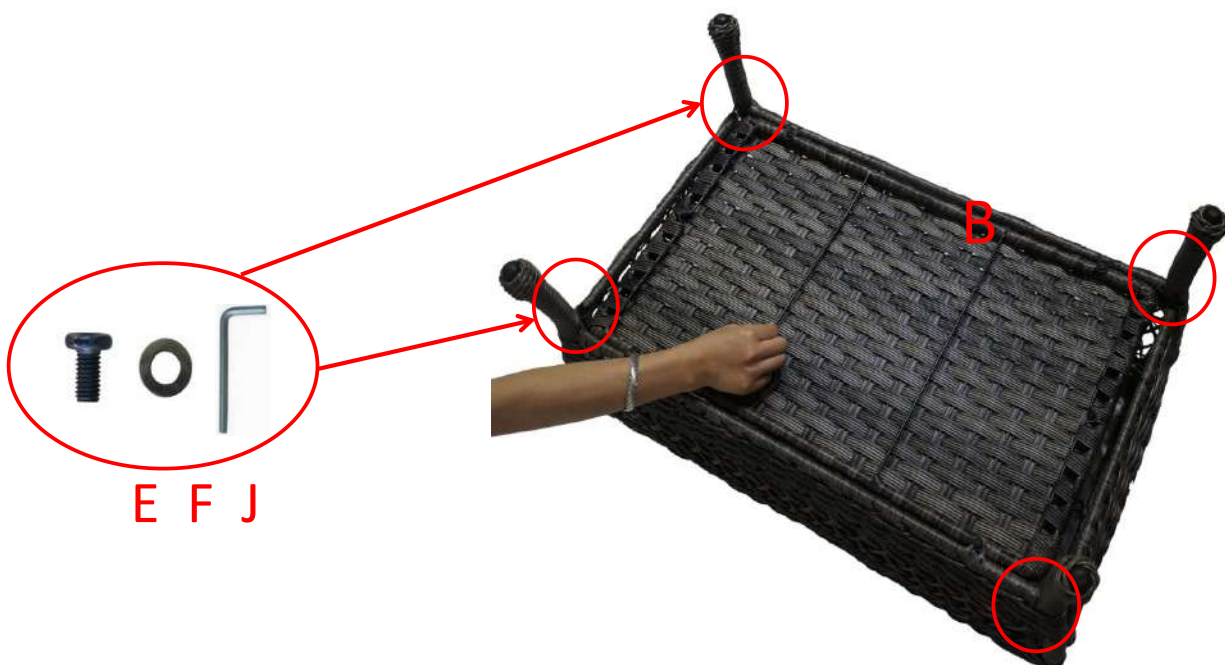
STEP 1

Hook side board (D) by front board (C1) and back board (C2) shown in diagram above. Then assemble side board (D) to front board (C1) and back board (C2) by using 4 short screws (E) and 4 washers (F) with allen wrench (J). Do not fully tighten all screws now.



STEP 2

Assemble bottom board (B) to table frame by using 4 short screws (E) and 4 washers (F) with allen wrench (J). Do not fully tighten all screws now.



STEP 3

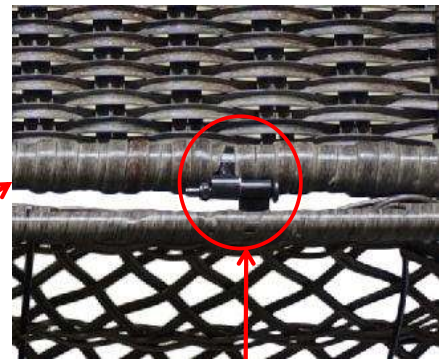
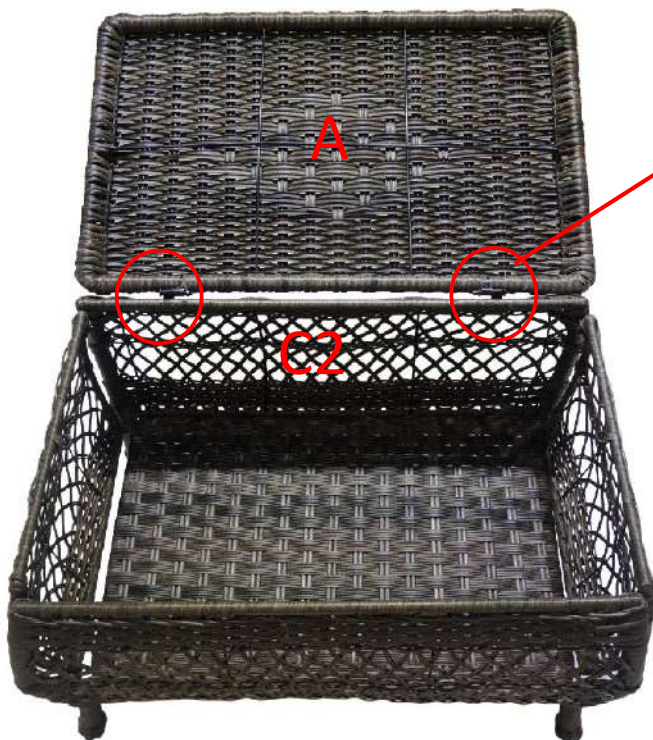
Place the assembled table frame on a flat surface to make sure that it is balanced and stable.

FULLY TIGHTEN ALL SCREWS NOW.



STEP 4

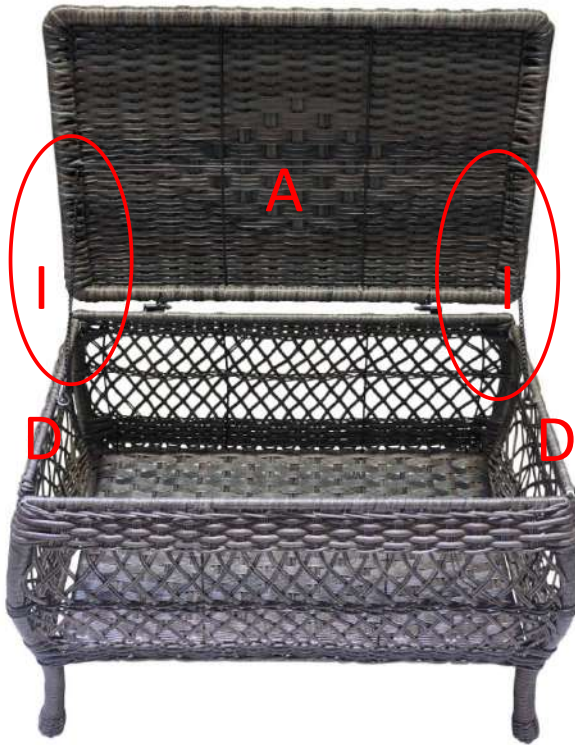
Assemble table top (A) to back board (C2) by using 2 long screws (G) and 2 nuts (H) with allen wrench (J) and wrench (K).



H G K J

STEP 5

Lock 2 iron chains (I) on 2 side boards (D) and table top (A).



STEP 6

Cover table top (A) and complete the assembly.

